

www.eps-bhkw.de



**Your CHP Service.
Runs reliably.**

EPS REMAN CENTER PRODUCT CATALOG



EPS

OUR CONTRIBUTION TO A GREENER FUTURE!

With pride, we look back on the opening of our EPS Reman Center in 2024 – and would like to introduce you to our workshop. Certified, licensed, and committed to the highest quality, our EPS Reman Center stands for independent reconditioning of engine components, regardless of the manufacturer.

In addition to our on-site service offerings for gas engines, we concentrate our expertise here across 1,200 m² of modern, well-equipped space. This is how we breathe new life into your components – with clear ecological and economic goals. That is our commitment – that is the EPS Reman Center!

Since 2020, we have been part of INNIO Jenbacher GmbH & Co. OG and benefit together from valuable synergies. In this catalog, you will find our products and gain an insight into our portfolio.

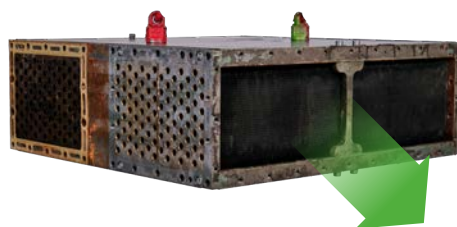
Interactive, digital, and available anytime!

Andreas Hülasing
Managing Director

PRODUCT CATALOG

Intercooler

before
processing



after the
reman process



EPS



01 Title



02 Introduction

PRODUKTÜBERSICHT



04 Intercooler



05 Cylinder head



07 Oil cooler



09 Gas mixing valve



11 Throttle valve



12 Thrust ring



13 Water pump,
mechanical



15 Water pump,
Grundfos



16 Electric
pre-lub pump



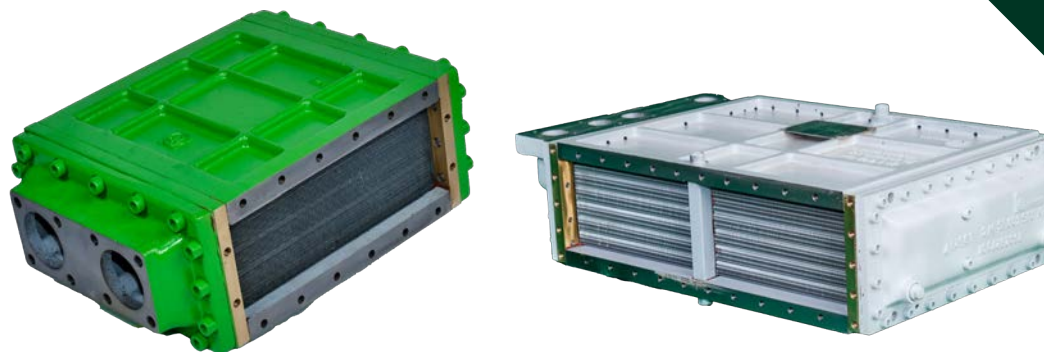
17 PBS turbocharger



18 Exhaust manifold

**ONE CLICK
TO THE
PRODUCT!**

EPS



INTERCOOLER

Description of the reman process

- Visual incoming goods inspection including photo documentation and incoming inspection report
- Initial pressure test
- Disassembly of the intercooler
- Cleaning and processing of the intercooler plates
- Cleaning and processing of the cooler core
- Reassembly of the intercooler
- Professional coating in original RAL color
- Final pressure test
- Visual and technical final inspection
- Packaging and delivery of the intercooler

Model	Series
Jenbacher	BR2
Jenbacher	BR3
Jenbacher	BR4
Jenbacher	BR6
MAN	E08er series
MAN	E28er series
MAN	E32er series

Further models available upon request.



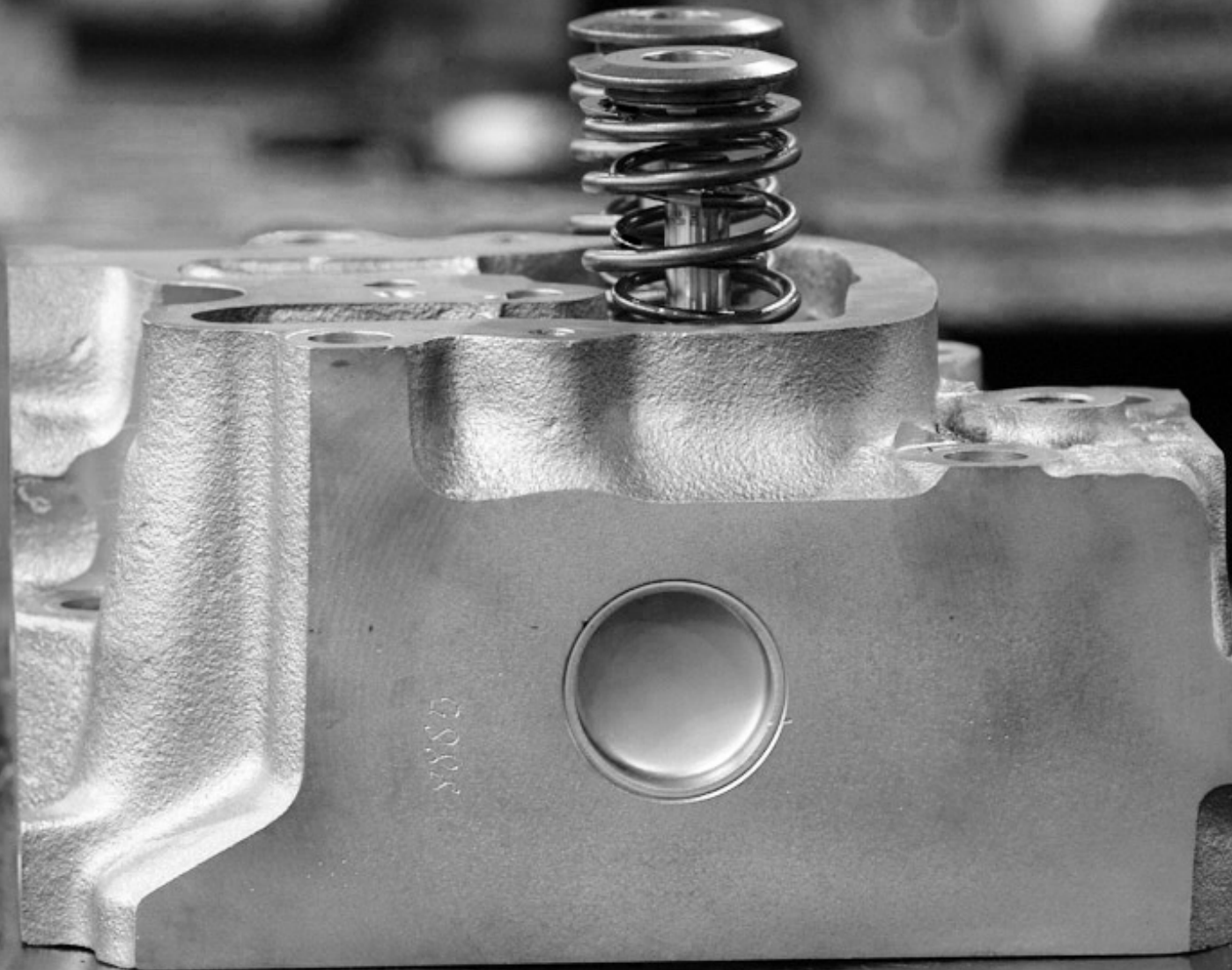
CYLINDER HEAD

Description of the reman process

- Visual incoming goods inspection including photo documentation and incoming inspection report
- Disassembly of all wear parts
- Cleaning and mechanical processing
- Reassembly
- Final pressure test
- Professional coating in original RAL color
- Visual and technical final inspection
- Packaging and delivery of the cylinder head

Model	Series
Jenbacher	BR2
Jenbacher	BR3
Jenbacher	BR4
Jenbacher	BR6
MAN	E08er series
MAN	E28er series
MAN	E32er series

Further models available upon request.





OIL COOLER

Description of the reman process

- Visual incoming goods inspection including photo documentation and incoming inspection report
- Disassembly of the oil cooler
- Cleaning and processing of the cooler housing and cover
- Cleaning and processing of the cooler core
- Reassembly of the oil cooler
- Professional coating in original RAL color
- Final pressure test
- Visual and technical final inspection
- Packaging and delivery of the oil cooler

Model	Series
Jenbacher	BR2
Jenbacher	BR3

Further models available upon request.





GAS MIXING VALVE

Description of the reman process

- Visual incoming goods inspection including photo documentation and incoming inspection report
- Disassembly of the gas mixing valve
- Cleaning and processing
- Electrical testing of individual components
- Reassembly of the gas mixing valve
- Professional coating in original RAL color
- Visual and technical final inspection
- Packaging and delivery of the gas mixing valve

Model	Series
Jenbacher	BR2
Jenbacher	BR3

Further models available upon request.

www.eps-bhkw.de

PRODUCT CATALOG



EPS



THROTTLE VALVE

Description of the reman process

- Visual incoming goods inspection including photo documentation and incoming inspection report
- Disassembly of the throttle valve
- Cleaning and processing (including bearing replacement)
- Reassembly of the throttle valve
- Professional coating in original RAL color
- Visual and technical final inspection
- Packaging and delivery of the throttle valve

Model	Series
Jenbacher	BR2
Jenbacher	BR3
Jenbacher	BR4

Further models available upon request.



THRUST RING

Description of the reman process

- Visual incoming goods inspection including photo documentation and incoming inspection report
- Disassembly of the thrust ring
- Cleaning and processing
- Professional coating in original RAL color
- Final pressure test
- Visual and technical final inspection
- Packaging and delivery of the thrust ring

Model	Series
Jenbacher	BR3
Jenbacher	BR4

Further models available upon request.



WATER PUMP, MECHANICAL

Model	Series
Jenbacher	BR2
Jenbacher	BR3

Further models available upon request.

Description of the reman process

- Visual incoming goods inspection including photo documentation and incoming inspection report
- Disassembly of the mechanical water pump
- Cleaning and processing
- Reassembly of the mechanical water pump
- Professional coating in original RAL color
- Visual and technical final inspection
- Packaging and delivery of the mechanical water pump

www.eps-bhkw.de

PRODUCT CATALOG



EPS



WATER PUMP, GRUNDFOS

Pump model

CR32-1 bis
CR 95-2-2

Circulation pump

TP 40-230/2
TP 65-180/2
TP 65-250/2

Further pump types available upon request.

Description of the reman process

- Visual incoming goods inspection including photo documentation and incoming inspection report
- Disassembly of the Grundfos water pump
- Cleaning and processing
- Reassembly of the Grundfos water pump
- Professional coating in original RAL color
- Visual and technical final inspection
- Packaging and delivery of the Grundfos water pump



VORSCHMIERPUMPE, ELEKTRISCH

Model	Series
Jenbacher	BR4

Further models available upon request.

Description of the reman process

- Visual incoming goods inspection including photo documentation and incoming inspection report
- Disassembly of the electric pre-lub pump
- Cleaning and processing
- Reassembly of the electric pre-lub pump
- Professional coating
- Visual and technical final inspection
- Creation of the final inspection report
- Packaging and delivery of the electric pre-lub pump



PBS TURBOCHARGER

Pump model

TCR10
TCR12
TCR14
TCR16
TCR18

Further pump types available upon request.

Description of the reman process

- Visual incoming goods inspection including photo documentation and incoming inspection report
- Technical assessment
- Disassembly and dismantling of the PBS turbocharger
- Cleaning and processing
- Balancing of the turbine rotor
- Reassembly using original manufacturer parts
- Visual and technical final inspection
- Packaging and delivery of the PBS turbocharger



EXHAUST MANIFOLD

Model	Series
Jenbacher	BR3
Jenbacher	BR4
Jenbacher	BR6

Further models available upon request.

Description of the reman process

- Visual incoming goods inspection including photo documentation and incoming inspection report
- Technical incoming inspection
- Disassembly and dismantling of the exhaust manifold
- Cleaning and processing
- Reassembly and welding in of individual original manufacturer replacement parts
- Visual and technical final inspection
- Creation of the final inspection report
- Packaging and delivery of the exhaust manifold

If desired, we can also process your existing exhaust manifold and replace only the defective compensators!

www.eps-bhkw.de

PRODUCT CATALOG



**Your CHP Service.
Runs reliably.**

We're always happy to advise you!

EPS BHKW GmbH

Speller Straße 12
49832 Beesten

Germany

+49 5905 94582-0
sales@eps-bhkw.de



**You can find
more information
on our website.**



EPS