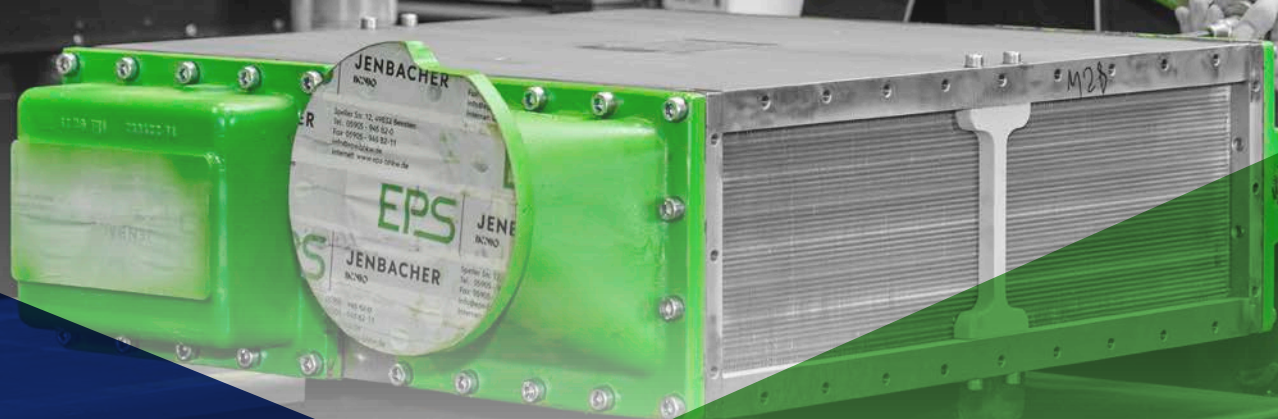


# EPS

JENBACHER  
INNIO



One click  
to the product!

[www.eps-bhkw.de](http://www.eps-bhkw.de)

EPS REMAN CENTER  
PRODUCT CATALOG



## Our Contribution to a Greener Future!

In 2024, we are especially proud to introduce our **EPS-Reman-Center**. Certified and licensed, it embodies the highest quality standards, defining our services in the independent remanufacturing of engine components!

In addition to our on-site service offerings for gas engines, we have consolidated our expertise in component remanufacturing within our new, 1,200 m<sup>2</sup> EPS Reman Center, equipped with the latest machinery.

We breathe new life into your components, focusing on ecological and economic goals – this is our commitment, this is our EPS Reman Center!

Since 2020, we have been part of INNIO Jenbacher GmbH & Co. OG, benefiting together from the synergies of this partnership.

In this catalog, we present our existing products and are excited to offer you a glimpse into our portfolio!

Interactive, digital, and always accessible!

**Andreas Hülasing**  
Managing Director

Intercooler

before  
processing



after the  
reman process





Product catalog

One click  
to the product!

1 | Title

2 | Introduction

4 |  Intercooler

5 |  Cylinder head

7 |  Oil cooler

9 |  Gas mixing valve

11 |  Throttle valve

12 |  Thrust ring

13 |  Water pump, mechanical

15 |  Water pump, Grundfos

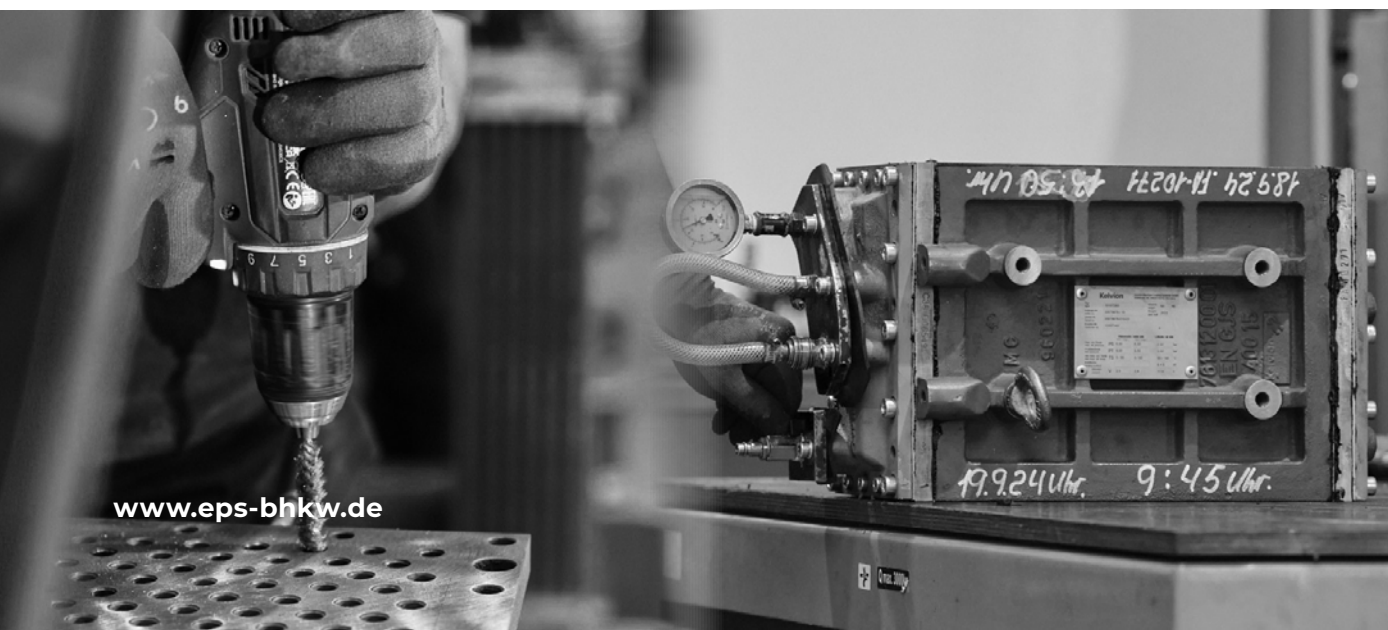
16 |  Electric pre-lub pump

# INTERCOOLER



## DESCRIPTION OF THE REMAN PROCESS

- Visual incoming inspection, including photographic documentation and intake report
- Incoming pressure testing
- Disassembly of the intercooler
- Cleaning and processing of the intercooler plates
- Cleaning and processing of the cooler bundle
- Reassembly of the intercooler
- Professional painting in the original RAL color tone
- Final pressure testing
- Visual and technical final inspection
- Packaging and delivery of the intercooler



[www.eps-bhkw.de](http://www.eps-bhkw.de)

### Model

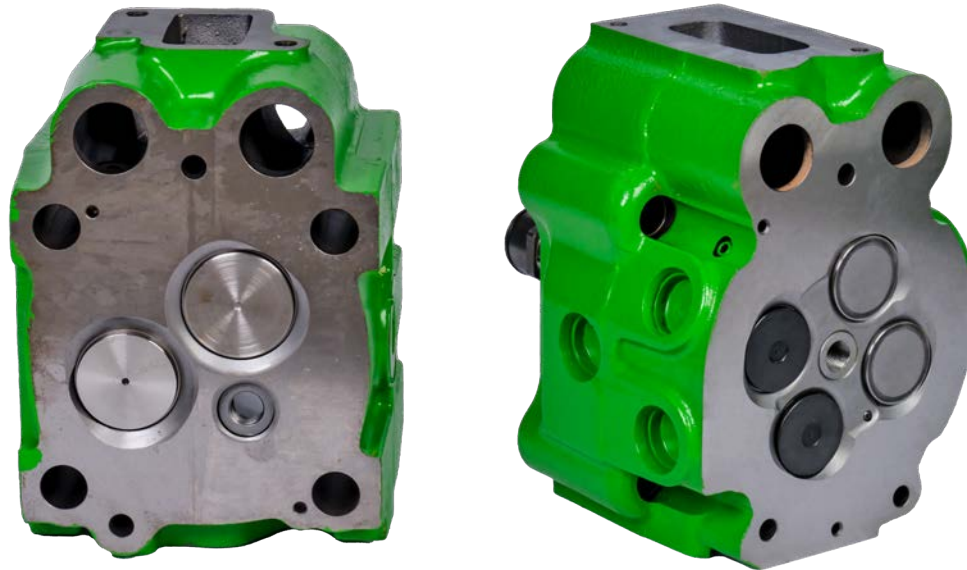
Jenbacher  
Jenbacher  
Jenbacher  
Jenbacher  
MAN  
MAN  
MAN

### Series

BR2  
BR3  
BR4  
BR6  
E08er Series  
E28er Series  
E32er Series

Further models available upon request.

# CYLINDER HEAD



## DESCRIPTION OF THE REMAN PROCESS

- Visual and technical incoming inspection, including photographic documentation and intake report
- Disassembly of all wear materials
- Cleaning and mechanical processing
- Reassembly
- Final pressure testing
- Professional painting in the original RAL color tone
- Visual and technical final inspection
- Packaging and delivery



[www.eps-bhkw.de](http://www.eps-bhkw.de)

### Model

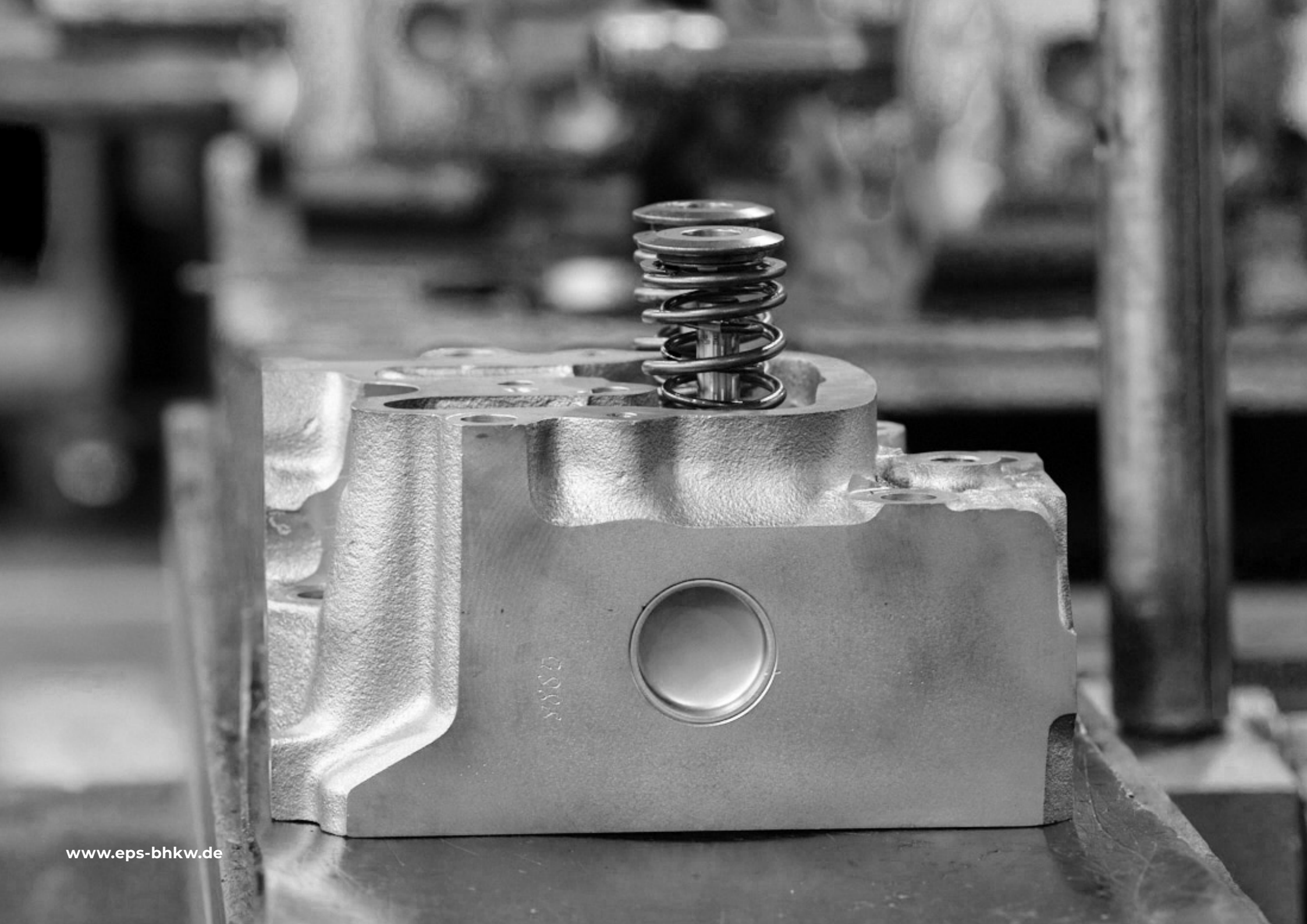
Jenbacher  
Jenbacher  
Jenbacher  
Jenbacher  
MAN  
MAN  
MAN

### Series

BR2  
BR3  
BR4  
BR6  
E08er  
E28er  
E32er

Further models available upon request.



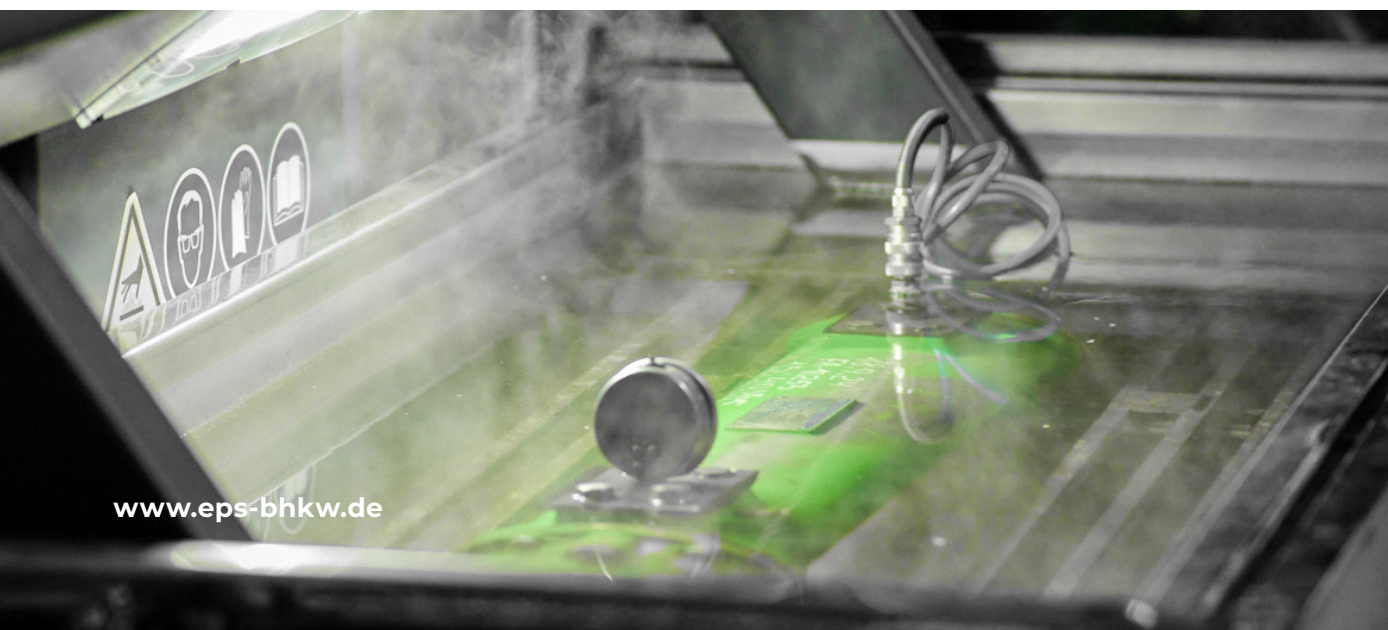


# OIL COOLER



## DESCRIPTION OF THE REMAN PROCESS

- Visual and technical incoming inspection, including photographic documentation and intake report
- Disassembly of the oil cooler
- Cleaning and processing of the cooler housing and cover
- Cleaning and processing of the cooler bundle
- Reassembly of the oil cooler
- Professional painting in the original RAL color tone
- Final pressure testing
- Visual and technical final inspection
- Packaging and delivery of the oil cooler



### Model

Jenbacher  
Jenbacher

### Series

BR2  
BR3





# GAS MIXING VALVE



## DESCRIPTION OF THE REMAN PROCESS

- Visual incoming inspection, including photographic documentation and intake report
- Disassembly
- Cleaning and processing
- Electrical testing of components
- Reassembly
- Professional painting in the original RAL color tone
- Visual and technical final inspection
- Packaging and delivery

### Model

Jenbacher  
Jenbacher

### Series

BR2  
BR3





# THROTTLE VALVE



## DESCRIPTION OF THE REMAN PROCESS

- Visual incoming inspection, including photographic documentation and intake report
- Disassembly
- Cleaning and processing (replacing bearings)
- Reassembly
- Professional painting in the original RAL color tone
- Visual and technical final inspection
- Packaging and delivery

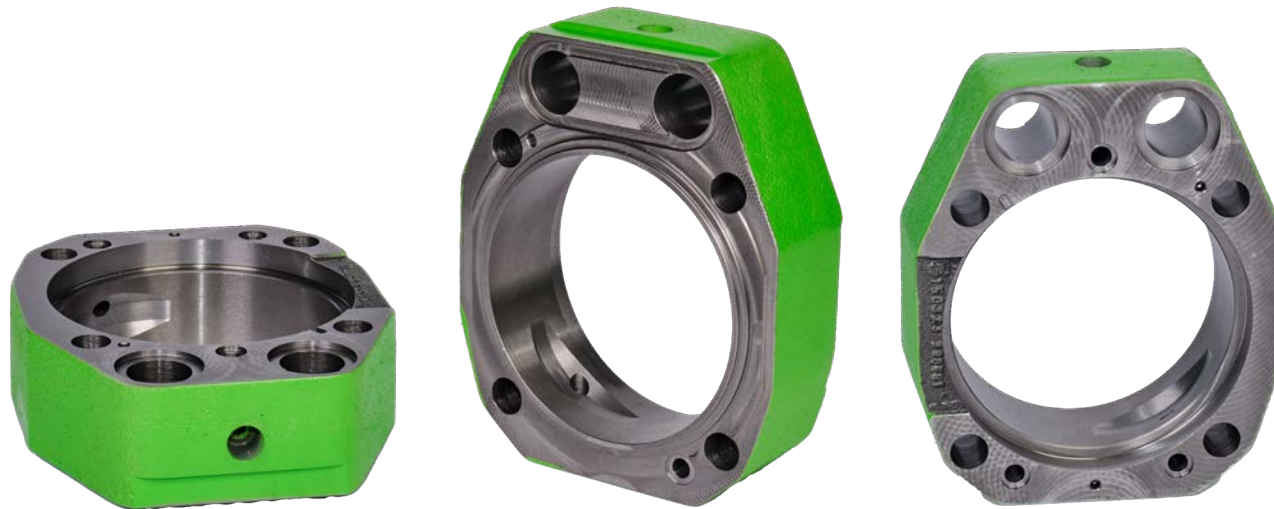
### Model

Jenbacher  
Jenbacher  
Jenbacher

### Series

BR2  
BR3  
BR4

# THRUST RING



## DESCRIPTION OF THE REMAN PROCESS

- Visual incoming inspection, including photographic documentation and intake report
- Disassembly
- Cleaning and processing
- Professional painting in the original RAL color tone
- Final pressure testing
- Visual and technical final inspection
- Packaging and delivery



### Model

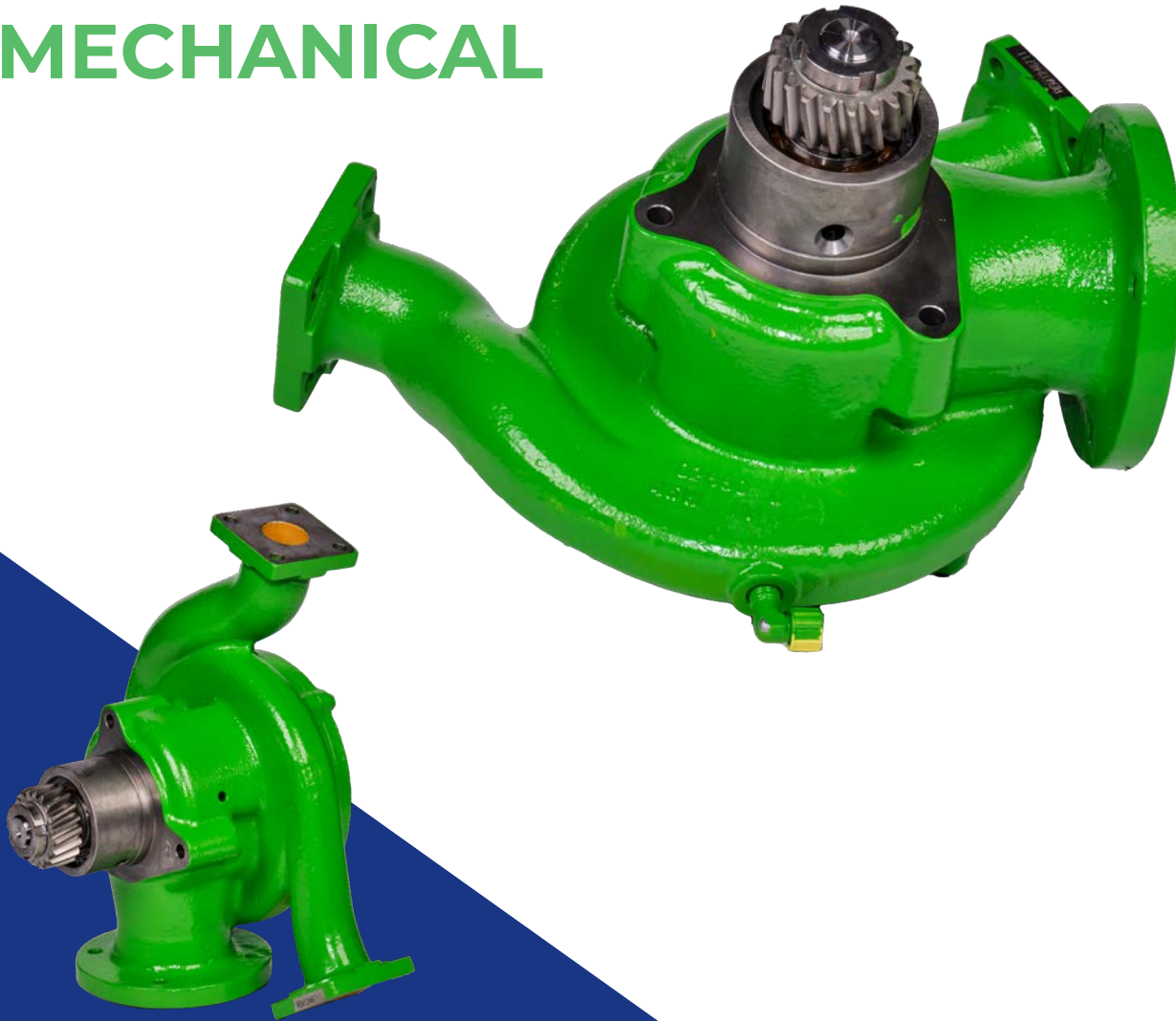
Jenbacher  
Jenbacher

### Series

BR3  
BR4



# WATER PUMP, MECHANICAL



## DESCRIPTION OF THE REMAN PROCESS

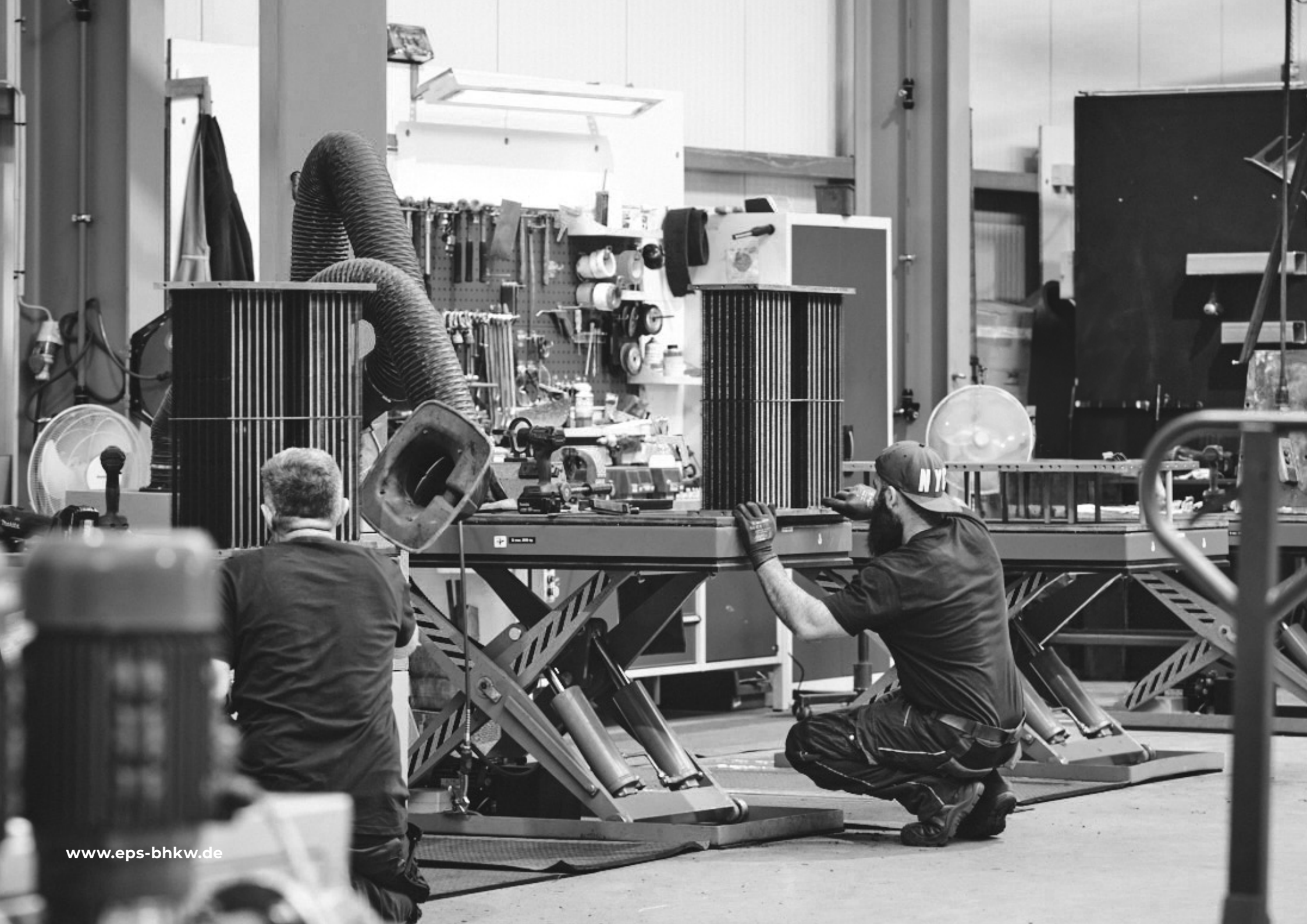
- Visual incoming inspection, including photographic documentation and intake report
- Disassembly
- Cleaning and processing
- Reassembly
- Professional painting in the original RAL color tone
- Visual and technical final inspection
- Packaging and delivery

### Model

Jenbacher  
Jenbacher

### Series

BR2  
BR3





# WATER PUMP, GRUNDFOS



## DESCRIPTION OF THE REMAN PROCESS

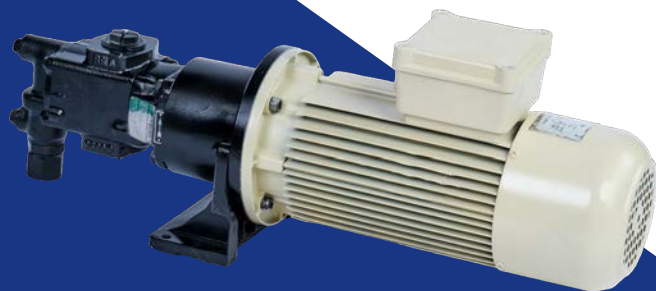
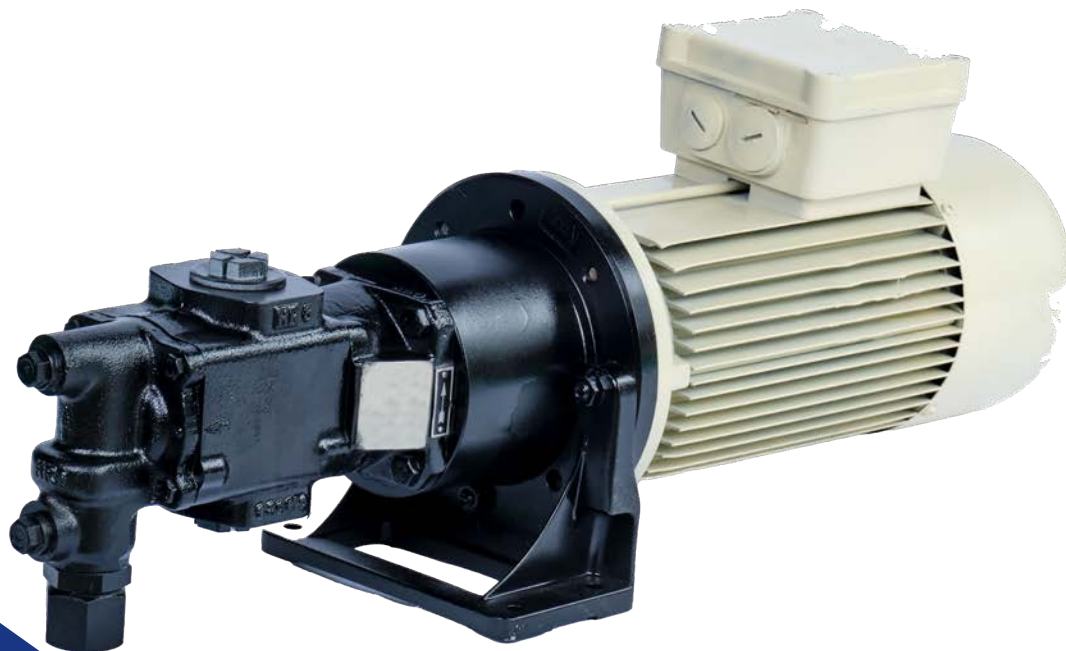
- Visual incoming inspection, including photographic documentation and intake report
- Disassembly
- Cleaning and processing
- Reassembly
- Professional painting in the original RAL color tone
- Visual and technical final inspection
- Packaging and delivery

## Pump model

CR32-1  
CR32-2-2  
CR45-1-1  
CR64-1  
CR64-1-1

CR90-1-1  
CR95-1  
CR95-1-1  
CR95-2-2

# ELECTRIC PRE-LUB PUMP



## DESCRIPTION OF THE REMAN PROCESS

- Visual incoming inspection, including photographic documentation and intake report
- Disassembly
- Cleaning and processing
- Reassembly
- Professional painting
- Visual and technical final inspection
- Final report
- Packaging and delivery

### Model

Jenbacher

### Series

BR4



EPS

JENBACHER  
INNIO



**Feel free to contact us anytime for advice!**

**EPS BHKW GmbH**

Speller Straße 12  
49832 Beesten  
Germany  
+49 5905 94582-0  
sales@eps-bhkw.de  
www.eps-bhkw.de

*For more details,  
please visit  
our website.*

